

# CP-2 COOLANT PURIFIER

## High Speed Disc Centrifuge System with Automatic Solids Discharge for Batch Cleaning

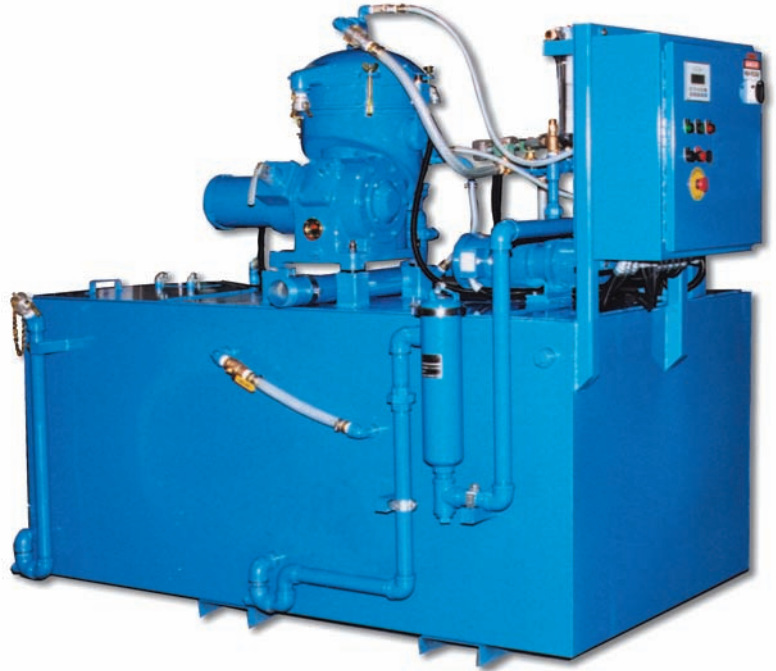
### Removes Tramp Oil and Solids

The Model CP-2 Centrifugal Coolant Purification System removes both tramp oil and fine solids from machine tool coolants, providing users with an economical auto-matic discharging disc centrifuge coolant recycling system.

The heart of the **CP-2** is the Mitsubishi SJ-700 self-discharging high speed disc centrifuge. The system is enhanced with the Sanborn proprietary mixing system in the dirty tank that helps direct tramp oil and solids into the centrifuge for superior separation of fluid contaminants.

The SJ-700 automatically discharges collected solids without operator involvement. Units will remove a wide range of particles – ferrous and non-ferrous, glass, ceramic, and graphite, down to 5 micron. Tramp oil will be removed to 0.5% in the cleaned coolant.

The **CP-2 System** comes complete with a centrifuge that allows for cleaned coolant to be discharged into a clean tank, oil discharged into a waste oil drum, and solids discharged into a waste container. Other components include a separate centrifuge feed pump, dirty and clean tank, valving and controls. The CP-2 can be a free-standing batch processing unit, or it can be installed for on-line processing of a central coolant system. The processing capacity is 120 GPH.



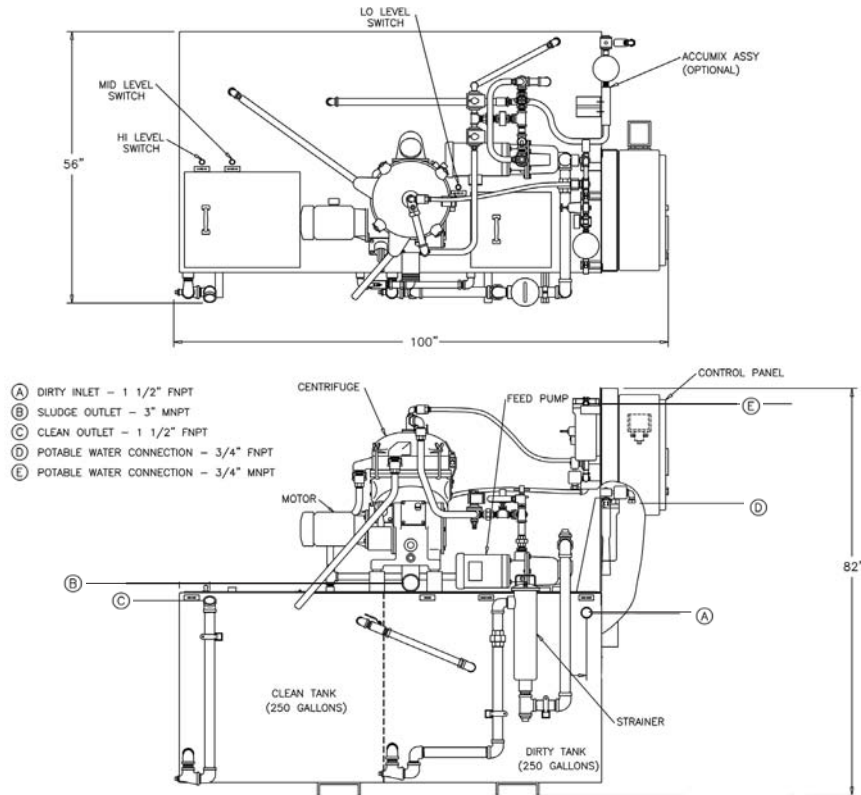
THE COOLANT PURIFIER MODEL CP-2

## FEATURES & BENEFITS

- 9,800 RPM Rotating Assembly provides superior tramp oil removal
- Self-discharging Bowl eliminates manual bowl clean-out for removal of solids
- Cleaned coolant is automatically mixed with coolant concentrate to preset levels
- Dirty coolant is mixed and homogeneous prior to centrifugal separation, allowing all the contaminants to be separated by the centrifuge
- Centrifuge uses no consumable media, producing less waste
- Rugged industrial construction with closed tanks reduces coolant odors prior to processing



## CP-2 LAYOUT



### Optional Coolant Make-up and Distribution

The CP-2 can incorporate an automatic clean coolant top-off system when ordered with the optional Accumix proportional make-up system. Dirty fluid is processed to the clean tank, and at a preset level the system begins adding proportioned coolant concentrate to the recycled coolant which then shuts off at the end of the batch. The recycled coolant is strengthened and is then ready to be distributed to the shop floor at the properly mixed ratio.

Systems are available with an optional clean coolant supply pump and return valve system that can provide distributed coolant throughout a plant through customer-supplied piping.

### GENERAL SPECIFICATIONS

<b>DIMENSIONS (L x W X H)</b>	<b>100" x 56" x 82"</b>
<b>MACHINE WEIGHT</b>	<b>2,000 lbs.</b>
<b>SHIPPING WEIGHT</b>	<b>2,200 LBS.</b>
<b>MAXIMUM FLOW</b>	<b>120 GPH</b>
<b>CONTROLS</b>	<b>MICROLOGIX AB</b>
<b>SLUDGE DISCHARGE</b>	<b>0.5 GPH</b>
<b>ELECTRICAL</b>	<b>208/230/460VOLT, 3Ph, 60Hz</b>
<b>ROTOR RPM</b>	<b>9,800</b>
<b>ROTOR MOTOR</b>	<b>2 HP</b>
<b>CITY WATER</b>	<b>2 GPH Intermittent</b>
<b>TANK CAPACITY (Dirty)</b>	<b>250 gal.</b>
<b>TANK CAPACITY (Clean)</b>	<b>250 gal.</b>
<b>INLET</b>	<b>1.5"</b>
<b>OUTLET</b>	<b>1.5"</b>
<b>SLUDGE OUTLET</b>	<b>3"</b>
<b>WATER CONNECTION</b>	<b>3/4"</b>



23 Walpole Park South  
 Walpole, MA 02081-2558 USA  
 Telephone (508) 660-9150  
 Fax: (508) 660-9151  
 E-mail sales@sanborntechnologies.com  
[www.sanborntechnologies.com](http://www.sanborntechnologies.com)

All specifications in this datasheet are subject to change without notice.  
 Copyright © 2006  
 REV-082006